



Shellharbour City Centre, NSW

G02/18 College Avenue

2	2	1
BED	BATH	CAR

MODERN APARTMENT

stylish apartment, directly across the road from Stockland Shopping Centre. Relax or entertain without leaving the comfort of your home; choose to be outdoors in the lush rooftop gardens capturing the inspiring lake, mountain and distant ocean views from every angle, or indoors with stylish, high quality inclusions and finishes designed for your ultimate comfort. Modern kitchen featuring sleek 20mm Ceasarstone benches, tiled splash back, streamlined soft-close cabinetry and range hood built-in dishwasher. Bedrooms feature plush textured carpet. Ensuite in main bedroom. Bathrooms features floor-to-ceiling stacked tiles, herringbone tiled floors, semi-frameless shower screen, modern chrome tap ware and accents and a hung vanity. Ducted air-conditioning, generous 15m² size balcony and one undercover car space plus storage area. Short walk to shops, cinema, restaurants, cafes, gyms.

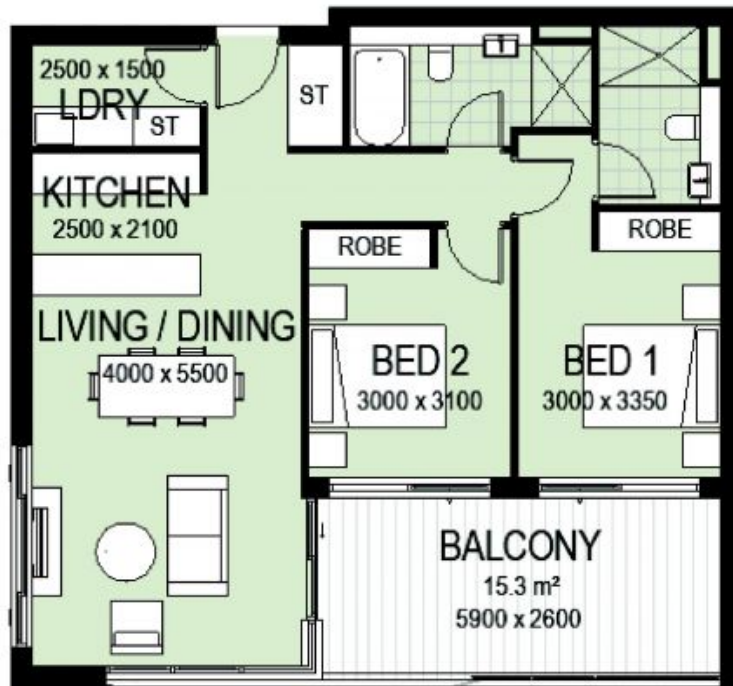
\$585 per week

Contact: Zoe Porritt
 0456 937 843
 Jye Sanjurjo
 0402 803 830

Type: Unit

Date Available: 13/02/2024

<https://www.spinellirealestate.com.au>



ELEVATION 77

16 College Avenue, Shellharbour City Centre

UNITS: B0.05, B1.05, B2.05, B3.04, A2.08

2 bedroom, 2 bathroom. Internal area - 78.1m² (approx.)

DISCLAIMER: Spinelli Real Estate endeavoured to the best of their ability to ensure the information provided is true and accurate. Views and floor plans shown are an approximation only. Spinelli Real Estate do not guarantee or warrant the accuracy or correctness of any information or statement contained in the information. Buyers should not rely on these images or floor plans as indicating the final view, design, appearance, content or constructed format of the building. Purchasers must make and rely on their own enquiries and the provisions of the Contract of Sale and should obtain advice in making any decision based on the information contained herein.



SPINELLI 
REAL ESTATE

Plans shown are only indicative of layout. Dimensions are approximate.

Shellharbour City Centre, NSW  **Orritt**
G02/18 College Avenue 0456 937 843

Jye Sanjurjo
0402 803 830