

Wollongong, NSW

9/6-8 Hercules Street

2	2	1
BED	BATH	CAR

BELLEVUE APARTMENTS

- :: 2 bedroom modern apartment
- :: Close to CBD
- :: Open plan living
- :: Security building
- :: Close to all amenities

LIFESTYLE. Well presented and modern 2 bedroom unit on the first floor in CBD Wollongong. Close proximity to restaurants, cafes, train station, bus stop and Wollongong Hospital. Features include open plan living, modern kitchen with gas cooking and dishwasher, built-in wardrobes, ensuite in the master bedroom. Air conditioner. Generous sized balcony. Security building with lift access from the basement carpark, including storage cage. Definitely worth an inspection.

\$630 pw

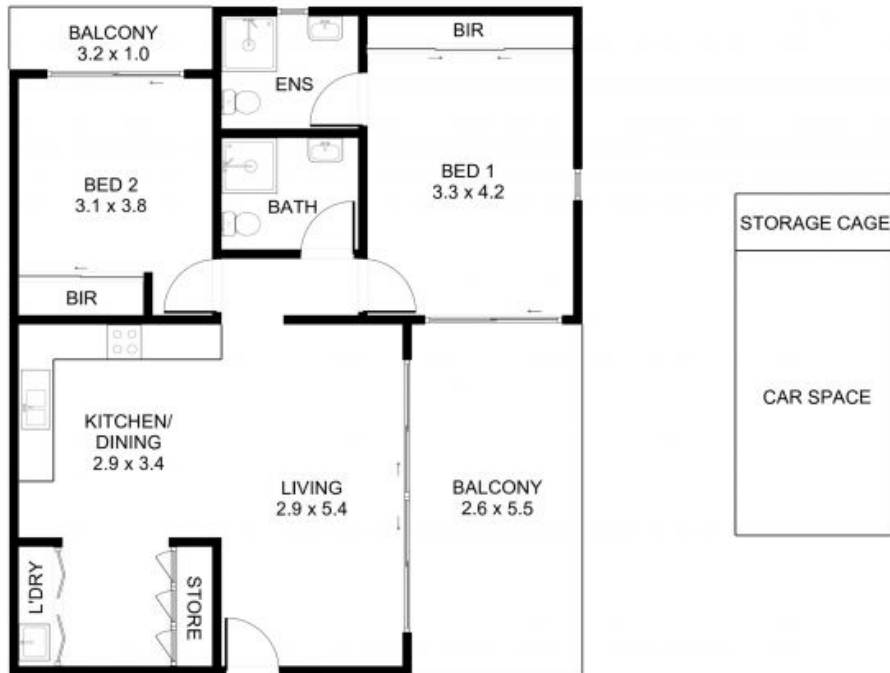
Contact: Zoe Porritt
 0456 937 843
 Chelsea Donovan
 0419 233 657

Type: Apartment

Date Available: 08/07/2023

Bond: \$2520

<https://www.spinellirealestate.com.au>



DISCLAIMER Spinelli Real Estate used the best endeavours to make the information on this floorplan accurate and true. Unit areas if shown are approximate only. Spinelli Real Estate do not guarantee or warrant the accuracy or correctness of any information or statement contained in the above floor plan. Buyers should not rely on this floorplan as indicating the final design, appearance, content or as constructed format of the building. Buyers must make and rely on their own enquiries and should obtain advice in making any decision based on the information contained herein.

SPINELLI 
REAL ESTATE

Plans shown are only indicative of layout. Dimensions are approximate.

Wollongong, NSW
9/6-8 Hercules Street

Zoe Porritt
0456 937 843

Chelsea Donovan
0419 233 657