



Shellharbour, NSW

9/20-26 Addison Street

2	2	1
BED	BATH	CAR

SHELLHARBOUR VILLAGE LIFESTYLE

LIFESTYLE. A lifestyle choice with easy-care living, convenient beach-side address, within a short stroll to Shellharbour beach and just footsteps to village shops, cafes and eateries. Two decent size bedrooms with built-in robes. Ensuite to the main bedroom. Main bathroom with a bathtub. Modern looking kitchen opening onto back deck - complete with dishwasher and ceramic cooktop and electric oven. Large open plan living and dining area opening onto east-facing balcony.. Large internal laundry. Lock up garage in secure basement parking. Plenty of awesome dining and coffee choices as well as an IGA across the road.

\$580 pw

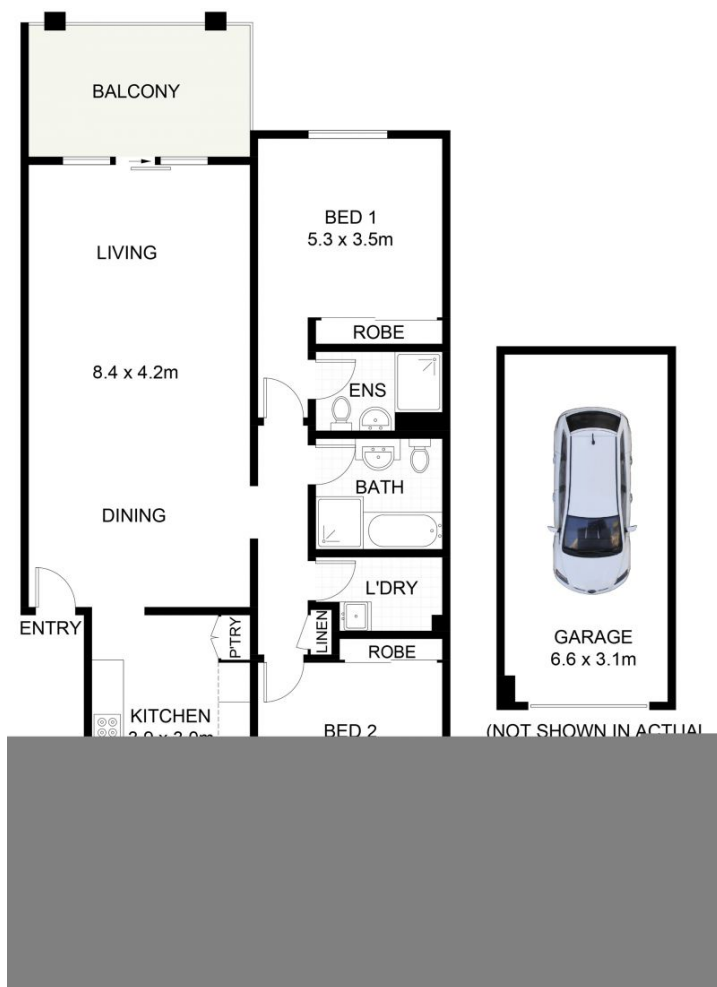
Contact: Zoe Porritt
 0456 937 843
 Chelsea Donovan
 0419 233 657

Type: Apartment

Date Available: 08/07/2023

Bond: \$2320

<https://www.spinellirealestate.com.au>



Plans shown are only indicative of layout. Dimensions are approximate.

Shellharbour, NSW
9/20-26 Addison Street

Zoe Porritt
0456 937 843

Chelsea Donovan
0419 233 657