



## Albion Park Rail, NSW

2/219 Princes Highway

<b>4</b>	<b>2</b>	<b>2</b>
BED	BATH	CAR

### SPACIOUS FOUR BEDROOM TOWNHOUSE

Quality built, well designed, stylish and spacious FOUR bedroom townhouse featuring a modern kitchen, open plan living, quality appliances, 2 living areas, one on each level, outdoor alfresco entertainment area, double lock-up garage, 3 toilets, 2 x air cons, gas connections, walk-in wardrobe and ensuite in the master bedroom. Plenty of storage plus more storage under the dwelling. Handy location, close proximity to bus stops and train station and a short drive to Stockland Shopping Centre. You will be impressed.

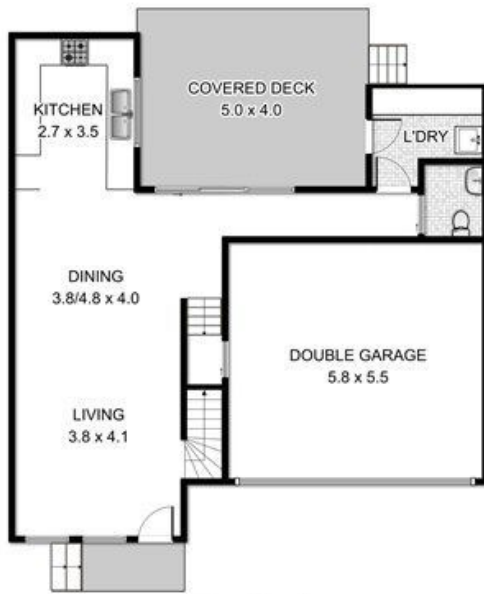
**\$620 pw**

**Contact:** Zoe Porritt  
 0456 937 843  
 Chelsea Donovan  
 0419 233 657

**Type:** Townhouse

**Date Available:** 17/04/2023

**<https://www.spinellirealestate.com.au>**



Ground Level



Upper Level

DISCLAIMER Spinelli Real Estate used the best endeavours to make the information on this floorplan accurate and true. Unit areas if shown are approximate only. Spinelli Real Estate do not guarantee or warrant the accuracy or correctness of any information or statements contained in the above floor plan. Buyers should not rely on this floorplan as indicating the final design, appearance, content or as constructed format of the building. Buyers must make and rely on their own enquiries and should obtain advice in making any decision based on the information contained herein.

**SPINELLI**   
REAL ESTATE

Plans shown are only indicative of layout. Dimensions are approximate.

**Albion Park Rail, NSW**  
2/219 Princes Highway

**Zoe Porritt**  
0456 937 843

**Chelsea Donovan**  
0419 233 657