



**Shellharbour, NSW**  
Level 1/2/30A Addison Street

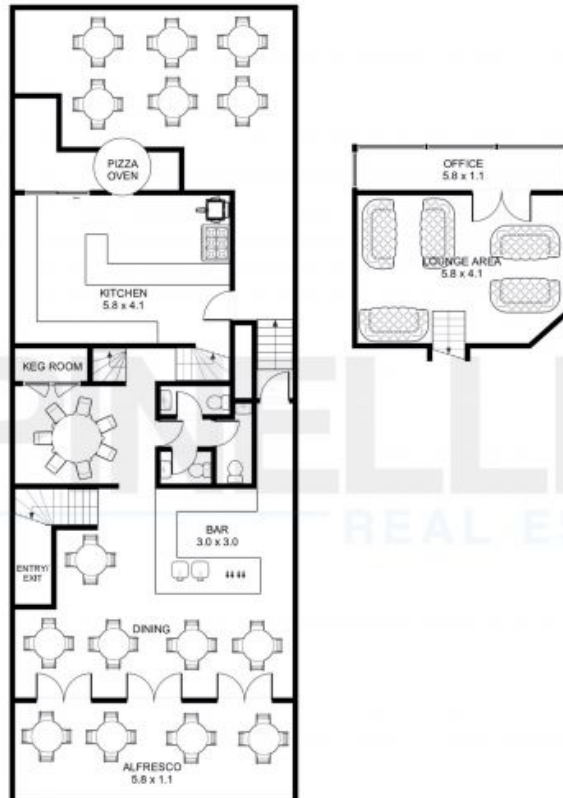
**0** BED **0** BATH **CAR**

**PERCH BAR - TIME FOR A SEA CHANGE**

Be your own boss! This popular restaurant and bar is positioned in the heart of the quaint Shellharbour Village. Plenty of potential only trades Thursday to Sunday from 5:00pm. Surf during the day and have 3 days off a week. Serves awesome food, pizzas and licensed till midnight. Seats 110 with 3 separate dining/lounge areas. Main bar, large balcony, generous sized seating area at the back which is great for hosting private events and an upstairs lounge area. Commercial kitchen. Currently employing 3 front staff and 4 in the kitchen. Getting great Google reviews. Good Menulog sales. Long term lease in place. Definitely a growth area with the massive expansion of new apartments in the immediate vicinity as well as the new Shellharbour Marina. For more information please contact the listing agent Paul Spinelli. Confidentiality assured.

**Contact Agent**

**Contact:** Paul Spinelli  
0415 112 702  
**Type:** Food/Hospitality  
<https://www.spinellirealestate.com.au>



SPINELLI REAL ESTATE

DISCLAIMER Spinelli Real Estate used the best endeavours to make the information on this floorplan accurate and true. Unit areas if shown are approximate only. Spinelli Real Estate do not guarantee or warrant the accuracy or correctness of any information or statement contained in the above floor plan. Buyers should not rely on this floorplan as indicating the final design, appearance, content or as constructed format of the building. Buyers must make and rely on their own enquiries and should obtain advice in making any decision based on the information contained herein.

**SPINELLI** REAL ESTATE

Plans shown are only indicative of layout. Dimensions are approximate.

**Shellharbour, NSW**  
Level 1/2/30A Addison Street

**Paul Spinelli**  
0415 112 702