



**Shellharbour City Centre, NSW**  
12/1 Memorial Drive

**2** | **2** | **1**  
BED | BATH | CAR

**SPACIOUS TWO BEDROOM APARTMENT**

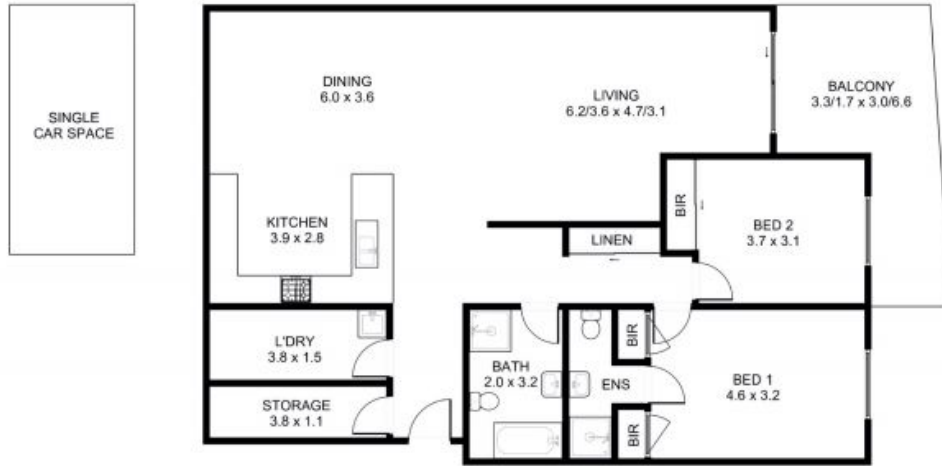
Generous sized two bedroom apartment with lake and escarpment views located in the heart of Shellharbour City. Modern apartment with open plan living. Kitchen features Miele appliances, 4 burner gas stove, electric oven and dishwasher. Caesar stone benchtops. Good sized bedrooms both with air con units and built in wardrobes, main with ensuite. Modern bathroom with separate shower and bath. Large laundry, handy storage room. NBN connected. Additional air con in the open living area. Nice sized balcony to kick back enjoy the stunning sunsets over the escarpment. Single car space in the secure basement. Located directly across from Stockland Shopping Centre and within a 5-10min drive to local beaches, train station, Lake Illawarra and Shellharbour Marina.

**\$590 pw**

**Contact:** Adam Spinelli  
0447 771 445  
Zoe Porritt  
0456 937 843

**Type:** Apartment  
**Date Available:** 31/12/2023

<https://www.spinellirealestate.com.au>



DISCLAIMER Spinelli Real Estate used the best endeavours to make the information on this floorplan accurate and true. Unit areas if shown are approximate only. Spinelli Real Estate do not guarantee or warrant the accuracy or correctness of any information or statement contained in the above floor plan. Buyers should not rely on this floorplan as indicating the final design, appearance, content or as constructed format of the building. Buyers must make and rely on their own enquiries and should obtain advice in making any decision based on the information contained herein.



Plans shown are only indicative of layout. Dimensions are approximate.

**Shellharbour City Centre, NSW** Spinelli  
12/1 Memorial Drive 0447 771 445

**Zoe Porritt**  
0456 937 843