



Shellharbour City Centre, NSW
Level 2/01/18 College Avenue

2 | **2** | **1**
BED | BATH | CAR

BRAND NEW MODERN APARTMENT
AVAILABLE NOW!

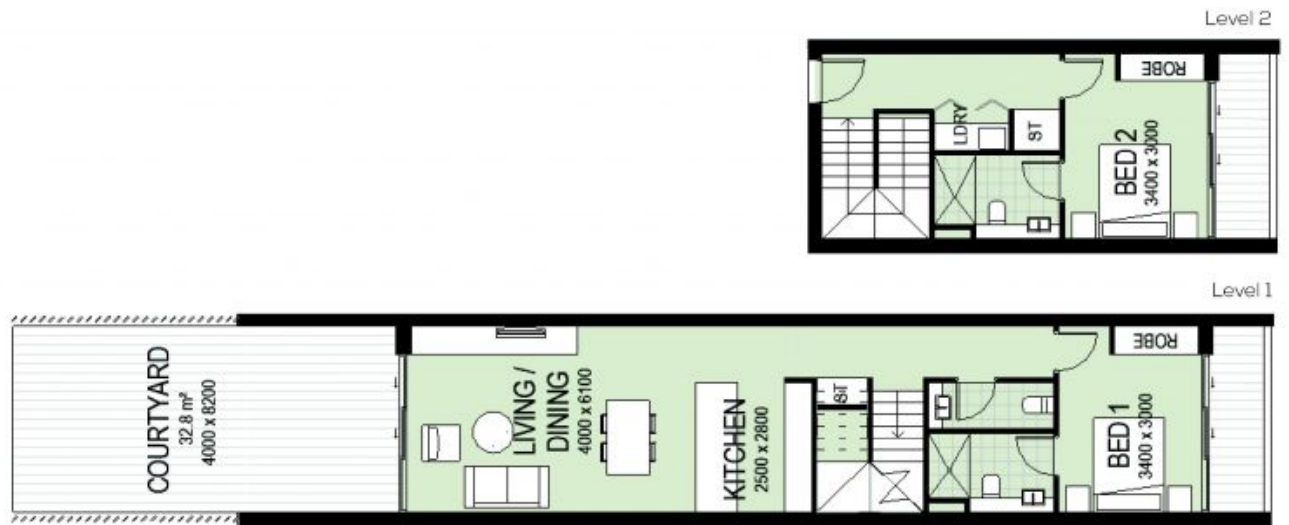
Brand new stylish apartment on level 2 with ESCARPMENT AND LAKE VIEWS directly across the road from Stockland Shopping Centre. Relax or entertain without leaving the comfort of your home, choose to be outdoors in the lush rooftop gardens capturing the inspiring lake, mountain and distant ocean views from every angle, or indoors with stylish, high quality inclusions and finishes designed for your ultimate comfort. Modern kitchen featuring sleek 20mm Ceasarstone benches, tiled splash back, streamlined soft-close cabinetry and range hood built-in dishwasher. Bedroom feature plush textured carpet. Bathroom features floor-to-ceiling stacked tiles, herringbone tiled floors, semi-frameless shower screen, modern chrome tap ware and accents and a hung vanity. Ducted air-conditioning, one undercover car space plus storage area. Short walk to shops, cinema, restaurants, cafes, gyms.

\$630

Contact: Zoe Porritt
0456 937 843

Type: Apartment
Date Available: 08/05/2023

<https://www.spinellirealestate.com.au>



ELEVATION 77

16 College Avenue, Shellharbour City Centre

UNITS: B2.07, B2.08, B2.09

2 bedroom, 2 bathroom. Internal area - 67.6m² level 1, 32.8m² level 2(approx.)

DISCLAIMER: Spinelli Real Estate endeavours to the best of their ability to ensure the information provided is true and accurate. Views and floor plans shown are an approximation only. Spinelli Real Estate do not guarantee or warrant the accuracy or correctness of any information or statements contained in the information. Buyers should not rely on these images or floor plans as indicating the final view, design, appearance, content or constructed format of the building. Purchasers must make and rely on their own enquiries and the provisions of the Contract of Sale and should obtain advice in making any decision based on the information contained herein.

SPINELLI 
REAL ESTATE

Plans shown are only indicative of layout. Dimensions are approximate.

Shellharbour City Centre, NSW  **orritt**
Level 2/01/18 College Avenue 0456 937 843