



**Shell Cove, NSW**  
12 Condor Drive

**3** **1** **2**  
BED BATH CAR

**LIFESTYLE**

Awesome Location!

Set on a level block of approx 570m<sup>2</sup>, this family home offers two generous living areas plus large dining, covered outdoor entertaining areas and potential side access to park a boat or caravan. Features modern kitchen, air conditioner. Close to schools.

Located opposite parklands in one of Shell Cove's most popular positions just a short, easy stroll into Shellharbour Village or the new Marina precinct..

**\$650 per week**

**Contact:** Zoe Porritt  
0456 937 843  
Chelsea Cordes  
0419 233 657

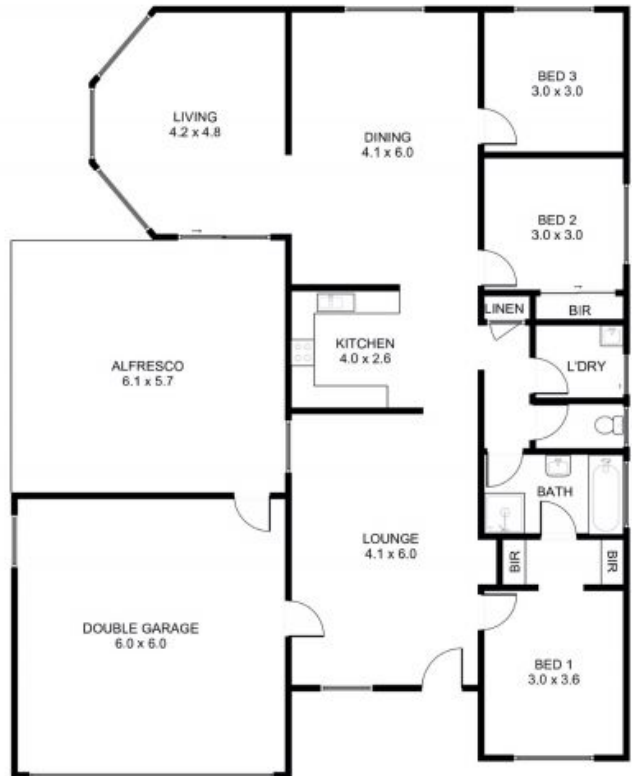
**Type:** House

**Date Available:** 14/10/2022

**Land:** 570 Square Metres

**Bond:** \$2600

<https://www.spinellirealestate.com.au>



DISCLAIMER Spinelli Real Estate used the best endeavours to make the information on this floorplan accurate and true. Unit areas if shown are approximate only. Spinelli Real Estate do not guarantee or warrant the accuracy or correctness of any information or statement contained in the above floor plan. Buyers should not rely on this floorplan as indicating the final design, appearance, content or as constructed format of the building. Buyers must make and rely on their own enquiries and should obtain advice in making any decision based on the information contained herein.



Plans shown are only indicative of layout. Dimensions are approximate.

**Shell Cove, NSW**  
12 Condor Drive

**Zoe Porritt**  
0456 937 843

**Chelsea Cordes**  
0419 233 657