



Mount Warrigal, NSW

6 Power Drive

3	1	1
BED	BATH	CAR

STYLISH & MODERN

This immaculate 3 bedroom brick home with easy one level living is located in the popular suburb of Mount Warrigal. The home has been fully renovated with attention to detail and quality workmanship. Everything from the 12mm glass balustrade at the front entry and rear deck, the new polyurethane kitchen with the Caesar stone benchtops, to the water resistant laminated flooring throughout and even an illuminated anti-mist mirror in the modern bathroom all speaks attention to detail, design and easy living. Other features include a separate toilet, built-in wardrobes, remote garage door, alarm, down lights throughout, vertical blinds, outdoor sensor lighting, fully fenced. Lock-up garage with room for a workshop, with plenty of on-site parking and a decent sized backyard. Great location with a short drive to schools, Stockland Shopping Centre, lake foreshores and the new Shellharbour Marina. You will be impressed!

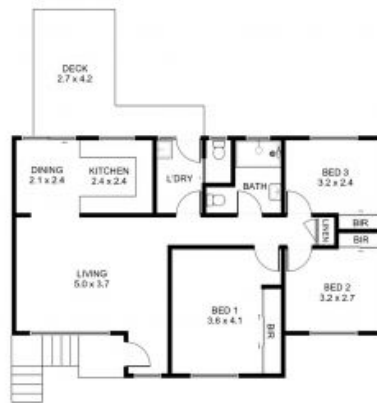
\$895,000-\$920,000

Contact: Paul Spinelli
 0415 112 702
 Adam Spinelli
 0447 771 445

Type: House

Land: 569Square Metres

<https://www.spinellirealestate.com.au>



DISCLAIMER Spinelli Real Estate used the best endeavours to make the information on this floorplan accurate and true. Unit areas if shown are approximate only. Spinelli Real Estate do not guarantee or warrant the accuracy or correctness of any information or statement contained in the above floor plan. Buyers should not rely on this floorplan as indicating the final design, appearance, content or as constructed format of the building. Buyers must make and rely on their own enquiries and should obtain advice in making any decision based on the information contained herein.



Plans shown are only indicative of layout. Dimensions are approximate.

Mount Warrigal, NSW
6 Power Drive

Paul Spinelli
0415 112 702

Adam Spinelli
0447 771 445