



**Blackbutt, NSW**  
28 Platypus Way

<b>5</b>	<b>3</b>	<b>2</b>
BED	BATH	CAR

**GENEROUS SIZED FAMILY HOME WITH A VIEW**

This multi-level generous sized 5 bedroom, north facing, brick veneer home ticks all the boxes for a growing family. One you enter the formal entry you get the sense that house was built with quality, space and ambience in mind. Tiled kitchen and solid Blackbutt timber flooring throughout the living areas with carpet in the bedrooms. The galley kitchen includes a dishwasher, gas cooking with an adjacent informal dining area. For the entertainer the home boasts a separate formal dining area, an undercover entertainment area with a spa. Master bedroom has a walk-in wardrobe, ensuite and a balcony with water and suburban views.

Features include:

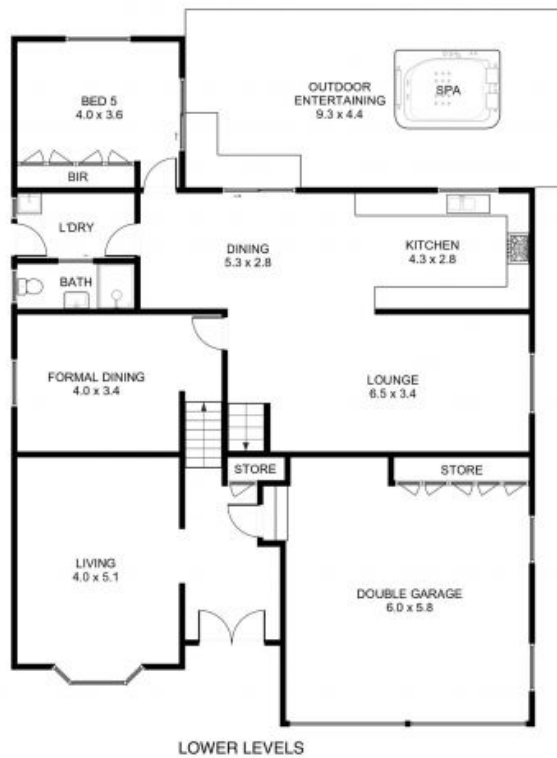
- Solar panels
- Double front doors
- 3 x linen/storage closets
- High ceilings in the upstairs living area
- Instant gas hot water
- LED down lights

**Contact Agent**

**Contact:** Paul Spinelli  
0415 112 702  
Adam Spinelli  
0447 771 445

**Type:** House  
**Land:** 509Square Metres

<https://www.spinellirealestate.com.au>



DISCLAIMER Spinelli Real Estate used the best endeavours to make the information on this floorplan accurate and true. Unit areas if shown are approximate only. Spinelli Real Estate do not guarantee or warrant the accuracy or correctness of any information or statement contained in the above floor plan. Buyers should not rely on this floorplan as indicating the final design, appearance, content or as constructed format of the building. Buyers must make and rely on their own enquiries and should obtain advice in making any decision based on the information contained herein.



Plans shown are only indicative of layout. Dimensions are approximate.

**Blackbutt, NSW**  
28 Platypus Way

**Paul Spinelli**  
0415 112 702

**Adam Spinelli**  
0447 771 445