



Albion Park Rail, NSW
6 Yallah Street

2	1	1
BED	BATH	CAR

HANDY LOCATION

Neat two bedroom home perched on a 659m2 block. The home features a large living area and generous sized bedrooms with near new carpet. High ceilings. Large kitchen with electric cooking. Good sized sunroom that could be converted into a third bedroom. Covered outdoor entertaining area. Air conditioning and ceiling fans. Gas heating. Single remote garage with large workshop. Ideal location within walking distance to Lake Illawarra, train station and shops.

\$480 per week

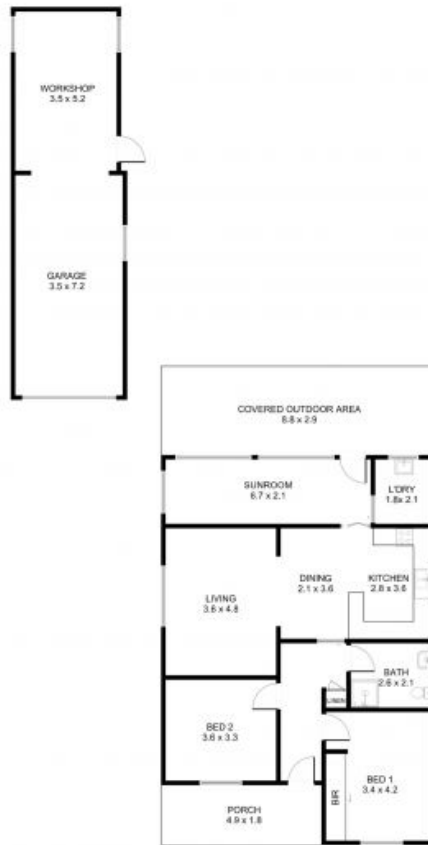
Contact: Zoe Porritt
0456 937 843

Type: House

Date Available: 11/03/2022

Land: 659 Square Metres

<https://www.spinellirealestate.com.au>



DISCLAIMER Spinelli Real Estate used the best endeavours to make the information on this floorplan accurate and true. Unit areas if shown are approximate only. Spinelli Real Estate do not guarantee or warrant the accuracy or correctness of any information or statement contained in the above floor plan. Buyers should not rely on this floorplan as indicating the final design, appearance, content or as constructed format of the building. Buyers must make and rely on their own enquiries and should obtain advice in making any decision based on the information contained herein.



Plans shown are only indicative of layout. Dimensions are approximate.

Albion Park Rail, NSW
6 Yallah Street

Zoe Porritt
0456 937 843