



Wollongong, NSW
3/12 New Dapto Road

2 | **2** | **1**
BED | BATH | CAR

SPACIOUS APARTMENT

Near new spacious two bedroom apartment on ground floor boasting a massive terrace area and alfresco. Quality floating timber floor boards throughout living and bedrooms. Open living area with split system air con, double stacker sliding doors to alfresco which has a quality outdoor pull down blind and gas connection for a bbq. Modern kitchen with gas cooking, electric oven, dishwasher, microwave and ceasar stone benchtops. Great sized master bedroom with his and her built in wardrobes, air con and large ensuite. Generous sized second bedroom with built in wardrobe, both bedrooms have two sliding doors for optimal light and air flow. Larger than average laundry. This apartment is disability friendly with larger doors and hallway. Single secure car space and storage area. NBN already connected. Located within walking distance to Hospital, Beaton Park and Public Transport. Short drive to CBD and beaches.

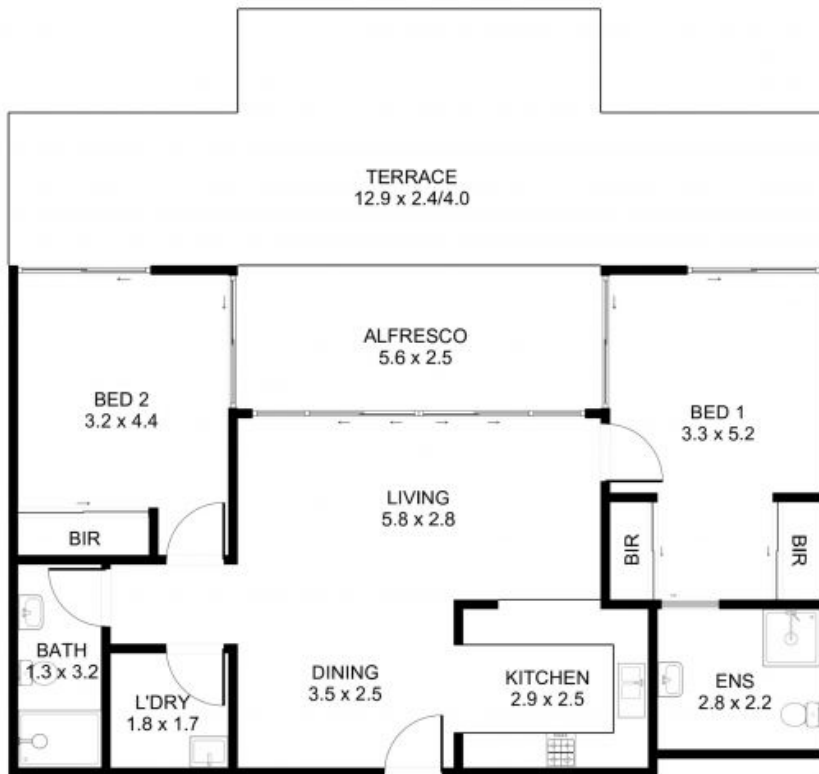
\$530 per week

Contact: Adam Spinelli
0447 771 445
Zoe Porritt
0456 937 843

Type: Apartment

Date Available: 15/10/2021

<https://www.spinellirealestate.com.au>



DISCLAIMER Spinelli Real Estate used the best endeavours to make the information on this floorplan accurate and true. Unit areas if shown are approximate only. Spinelli Real Estate do not guarantee or warrant the accuracy or correctness of any information or statement contained in the above floor plan. Buyers should not rely on this floorplan as indicating the final design, appearance, content or as constructed format of the building. Buyers must make and rely on their own enquiries and should obtain advice in making any decision based on the information contained herein.



Plans shown are only indicative of layout. Dimensions are approximate.

Wollongong, NSW
3/12 New Dapto Road

Adam Spinelli
0447 771 445

Zoe Porritt
0456 937 843