



Shop 1&2, 109-111 Wentworth Street, Port Kembla
Internal Size: 180m²



Port Kembla, NSW
109-111 Wentworth Street

0 BED	0 BATH	CAR
-----------------	------------------	------------

MEDICAL CENTRE

DA approved. Nicely presented medical centre with 4 consulting rooms, 2 x reception areas, lunchroom, 3 x toilets, plus 5 car spaces onsite. Close to public transport. Already partially fitted out including front reception desk, basins in all consulting rooms, built-in cabinets. Long term lease available.

\$1,000 + GST pw

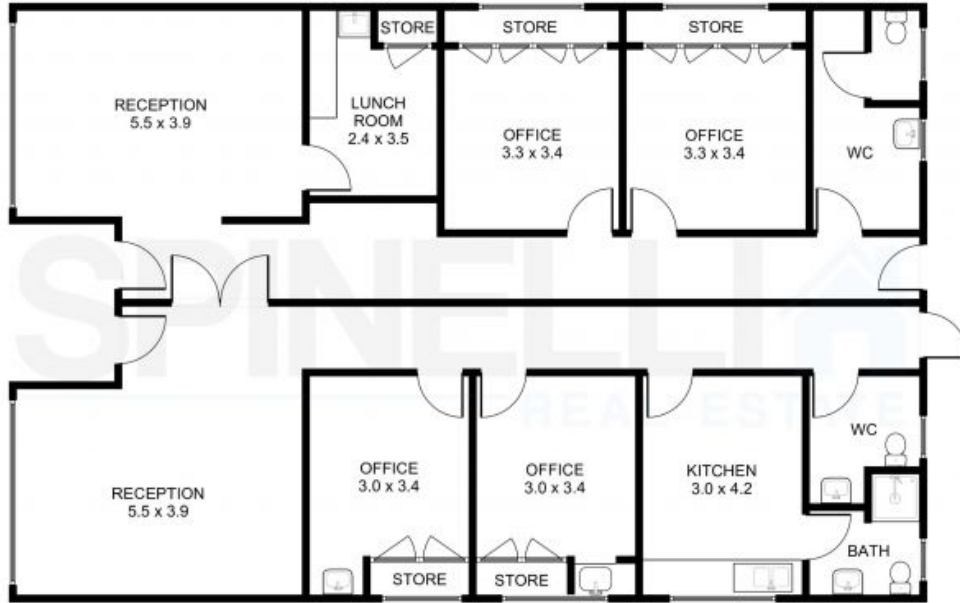
Council Rates: \$0/qtr (approx)

Water Rates: \$0/qtr (approx)

Contact: Paul Spinelli
0415 112 702
Adam Spinelli
0447 771 445

Type: Healthcare

<https://www.spinellirealestate.com.au>



Shop 1&2, 109-111 Wentworth Street, Port Kembla
 Internal Size: 180m²

DISCLAIMER Spinelli Real Estate used the best endeavours to make the information on this floorplan accurate and true. Unit areas if shown are approximate only. Spinelli Real Estate do not guarantee or warrant the accuracy or correctness of any information or statement contained in the above floor plan. Buyers should not rely on this floorplan as indicating the final design, appearance, content or as constructed format of the building. Buyers must make and rely on their own enquiries and should obtain advice in making any decision based on the information contained herein.



Plans shown are only indicative of layout. Dimensions are approximate.

Port Kembla, NSW
 109-111 Wentworth Street

Paul Spinelli
 0415 112 702

Adam Spinelli
 0447 771 445