



SPINELLI REAL ESTATE

Shellharbour City Centre, NSW
5/22 College Avenue

0 BED **0** BATH **CAR**

BRAND NEW COMMERCIAL SHOP

Exciting brand new spacious retail/commercial premises on ground level across from Stocklands Shellharbour City Centre and Shellharbour City Council. Currently available. Internal floor space 118m². High street front exposure with front street entrance and rear entrance from the spacious foyer. 2 levels. Disability access from a disability ramp and lift. Plenty of surrounding free parking. Would suit many types of varied businesses. For more information please contact the leasing agent Paul Spinelli on 0415 112 702.

\$82,260 + GST + Outgoings

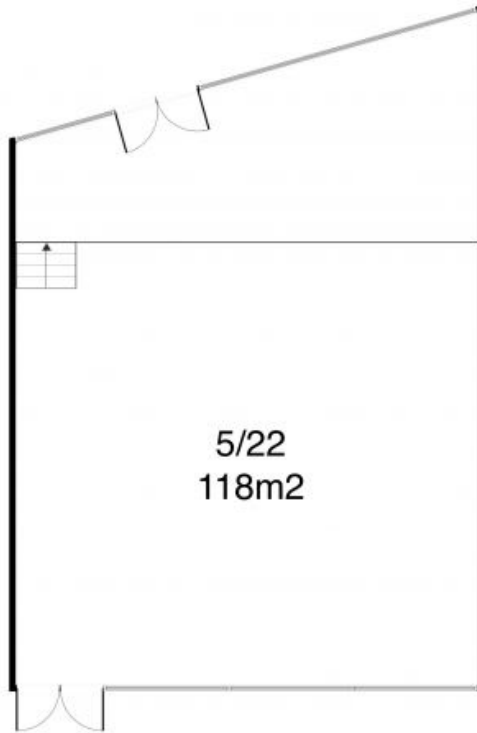
Council Rates: \$0

Water Rates: \$0

Contact: Paul Spinelli
0415 112 702
Adam Spinelli
0447 771 445

Type: Retail

<https://www.spinellirealestate.com.au>



DISCLAIMER Spinelli Real Estate used the best endeavours to make the information on this floorplan accurate and true. Unit areas if shown are approximate only. Spinelli Real Estate do not guarantee or warrant the accuracy or correctness of any information or statement contained in the above floor plan. Buyers should not rely on this floorplan as indicating the final design, appearance, content or as constructed format of the building. Buyers must make and rely on their own enquiries and should obtain advice in making any decision based on the information contained herein.



Plans shown are only indicative of layout. Dimensions are approximate.

Shellharbour City Centre, NSW Spinelli
5/22 College Avenue 0415 112 702

Adam Spinelli
0447 771 445