

Berkeley, NSW

3 Leicester Street

3	1	2
BED	BATH	CAR

IN EXCELLENT CONDITION

Perched on a hill on the high side of a quiet private cul-de-sac this 3 bedroom home with escarpment views on a 808m² block will impress. Council reserve at the rear. This ambient home features high ceilings, freshly painted inside and out, air conditioning, functional kitchen, built-in wardrobes in all bedrooms, 2 x toilets, carpet in living area, generous sized outdoor undercover entertainment area, large backyard with plenty of room for the kids to run around in, landscaped front and back yards, 4,500 litre water tank, double lock-up garage with a workshop area, garden shed + more. Large block with potential for a granny flat (STCA).

\$490,000-\$540,000

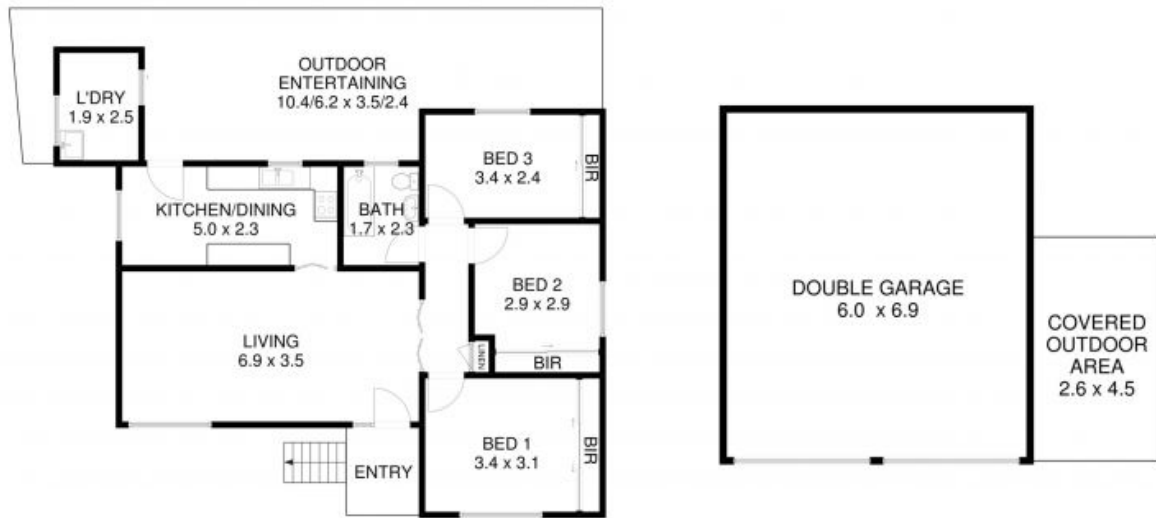
Contact: Paul Spinelli
0415 112 702

Type: House

Sold Date: 29/05/2019

Land: 808 Square Metres

<https://www.spinellirealestate.com.au>



3 Leicester Street, Berkeley

Internal Size: 125m² (inc garage)

DISCLAIMER Spinelli Real Estate used the best endeavours to make the information on this floorplan accurate and true. Unit areas if shown are approximate only. Spinelli Real Estate do not guarantee or warrant the accuracy or correctness of any information or statement contained in the above floor plan. Buyers should not rely on this floorplan as indicating the final design, appearance, content or as constructed format of the building. Buyers must make and rely on their own enquiries and should obtain advice in making any decision based on the information contained herein.



Plans shown are only indicative of layout. Dimensions are approximate.

Berkeley, NSW
3 Leicester Street

Paul Spinelli
0415 112 702