

Central Chambers

Office 29B Suite 3

29m²

DISCLAIMER: Spinelli Real Estate used the best endeavours to make the information on this floorplan accurate and true. Unit areas if shown are approximate only. Spinelli Real Estate do not guarantee or warrant the accuracy or correctness of any information or statement contained in the above floor plan. Buyers should not rely on this floorplan as indicating the final design, appearance, content or as constructed format of the building. Buyers must make and rely on their own enquiries and should obtain advice in making any decision based on the information contained herein.



Wollongong, NSW
Level 1/29B S3/157-161 Crown Street

0	0	
BED	BATH	CAR

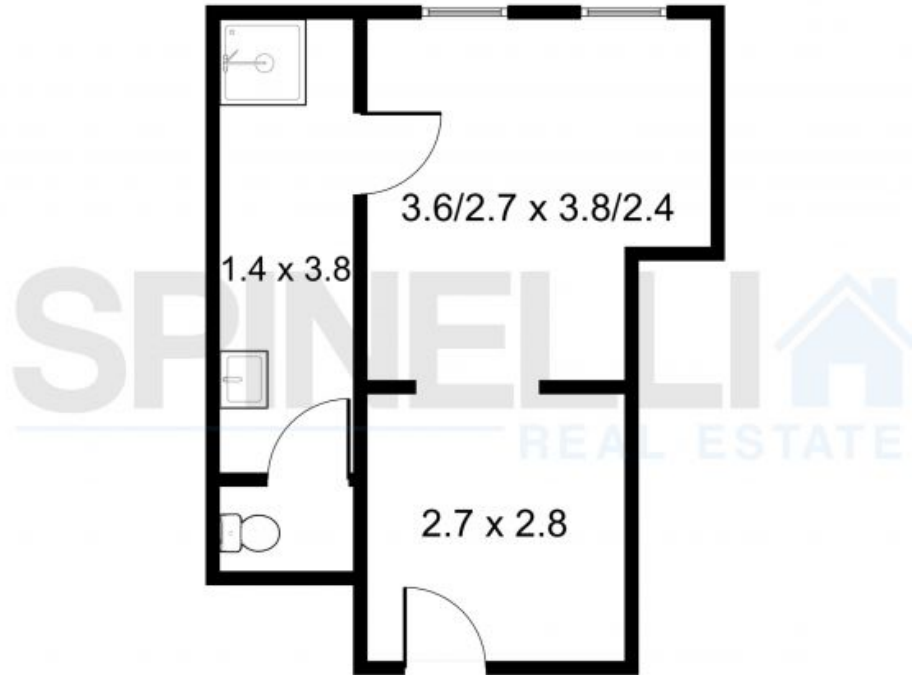
OFFICE SPACE WITH KITCHEN & SHOWER

Office space with kitchen, shower, laundry located in the heart of Wollongong CBD on Level 1 of the Wollongong Chambers Building. Flexible lease terms. Please contact the listing agent Paul Spinelli on 0415 112 702 for your private inspection.

\$250 pw

Contact: Paul Spinelli
0415 112 702
Adam Spinelli
0447 771 445

Type: Offices
<https://www.spinellirealestate.com.au>



Central Chambers

Office 29B Suite 3

29m²

DISCLAIMER Spinelli Real Estate used the best endeavours to make the information on this floorplan accurate and true. Unit areas if shown are approximate only. Spinelli Real Estate do not guarantee or warrant the accuracy or correctness of any information or statement contained in the above floor plan. Buyers should not rely on this floorplan as indicating the final design, appearance, content or as constructed format of the building. Buyers must make and rely on their own enquiries and should obtain advice in making any decision based on the information contained herein.



Plans shown are only indicative of layout. Dimensions are approximate.

Wollongong, NSW

Level 1/29B S3/157-161 Crown Street

Paul Spinelli

0415 112 702

Adam Spinelli

0447 771 445